

Natural Gas Royalty Trusts

A Weekly Analysis

June 24, 2002

Monthly Income Incline

With the latest reported on June 18, monthly distributions have rebounded from the lows for each of the three trusts (see top Chart next page). Futures prices imply further gains. The projected distribution yields for the Next Twelve Months are more than 10% of current unit price. Our calculated present value of distributions for the next 30 years exceeds stock price for each trust. Nor is there a general partner running up debt and expropriating future value for itself. During the past week a one-sigma increase in six-year natural gas futures translated into a one sigma increase in present value. Not waiting for our estimate, stock prices also moved up though not as much as they might have (see bottom Chart next page).

Kurt H. Wulff, CFA

Rank by McDep Ratio: Market Cap and Debt to Present Value

	<i>Symbol/</i>	<i>Rating</i>	<i>Price</i> <i>(\$/sh)</i> <i>20-Jun</i> <i>2002</i>	<i>Shares</i> <i>(mm)</i>	<i>Market</i> <i>Cap</i> <i>(\$mm)</i>	<i>Net</i> <i>Present</i> <i>Value</i> <i>(\$/sh)</i>	<i>Debt/</i> <i>Present</i> <i>Value</i>	<i>McDep</i> <i>Ratio</i>
Cross Timbers Royalty Trust	CRT		16.03	6.0	96	20.00	-	0.80
Hugoton RoyaltyTrust (46%)	HGT		10.74	18.4	200	15.80	-	0.68
San Juan Basin Royalty Trust	SJT	2	11.00	46.6	510	16.20	-	0.68

Buy/Sell rating after symbol: 1 - Strong Buy, 2 - Buy, 3 - Neutral, 4 - Sell, 5 - Strong Sell

McDep Ratio = Market cap and Debt to present value of oil and gas and other businesses

Rank by EV/Ebitda: Enterprise Value to Earnings Before Interest, Tax, Deprec.

	<i>Symbol/</i>	<i>Rating</i>	<i>Price</i> <i>(\$/sh)</i> <i>20-Jun</i> <i>2002</i>	<i>EV/</i> <i>Sales</i> <i>NTM</i>	<i>EV/</i> <i>Ebitda</i> <i>NTM</i>	<i>P/E</i> <i>NTM</i>	<i>Dividend or</i> <i>Distribution</i> <i>NTM</i> <i>(%)</i>	<i>PV/</i> <i>Ebitda</i> <i>NTM</i>
Cross Timbers Royalty Trust	CRT		16.03	5.9	8.5	9	10.9	10.6
San Juan Basin Royalty Trust	SJT	2	11.00	5.4	6.9	10	10.3	10.2
Hugoton RoyaltyTrust (46%)	HGT		10.74	4.6	6.8	10	10.4	10.0

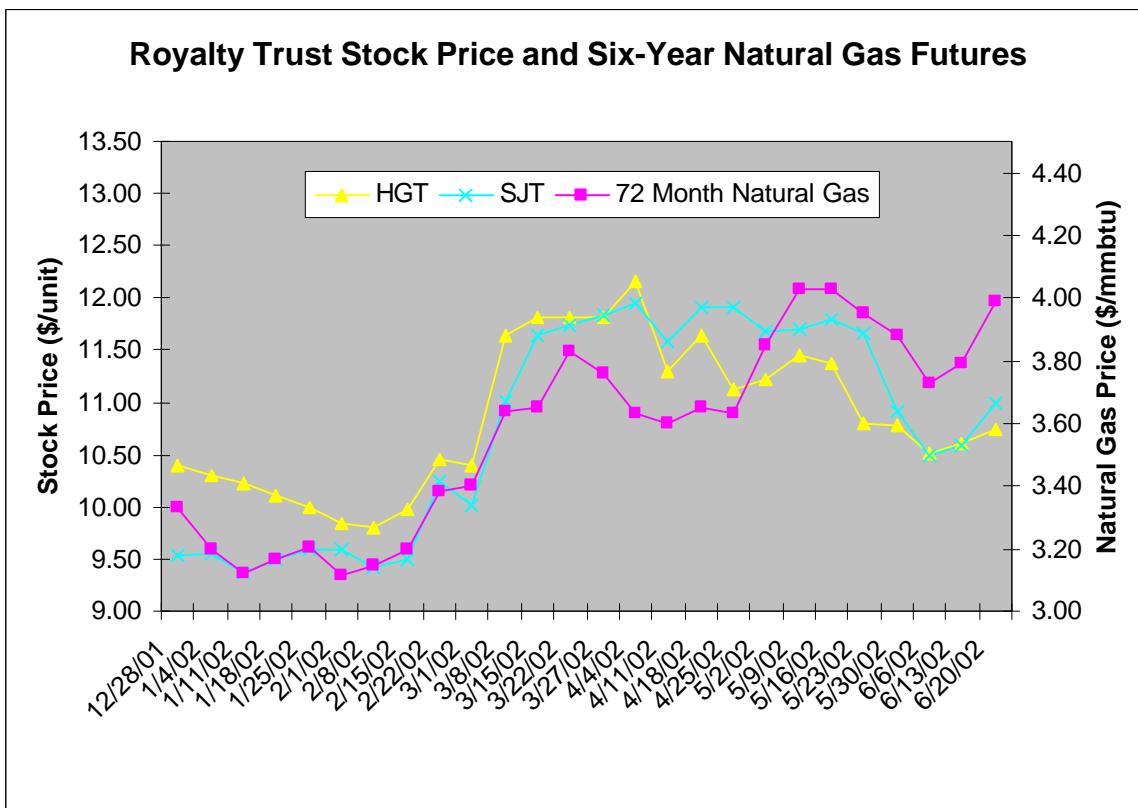
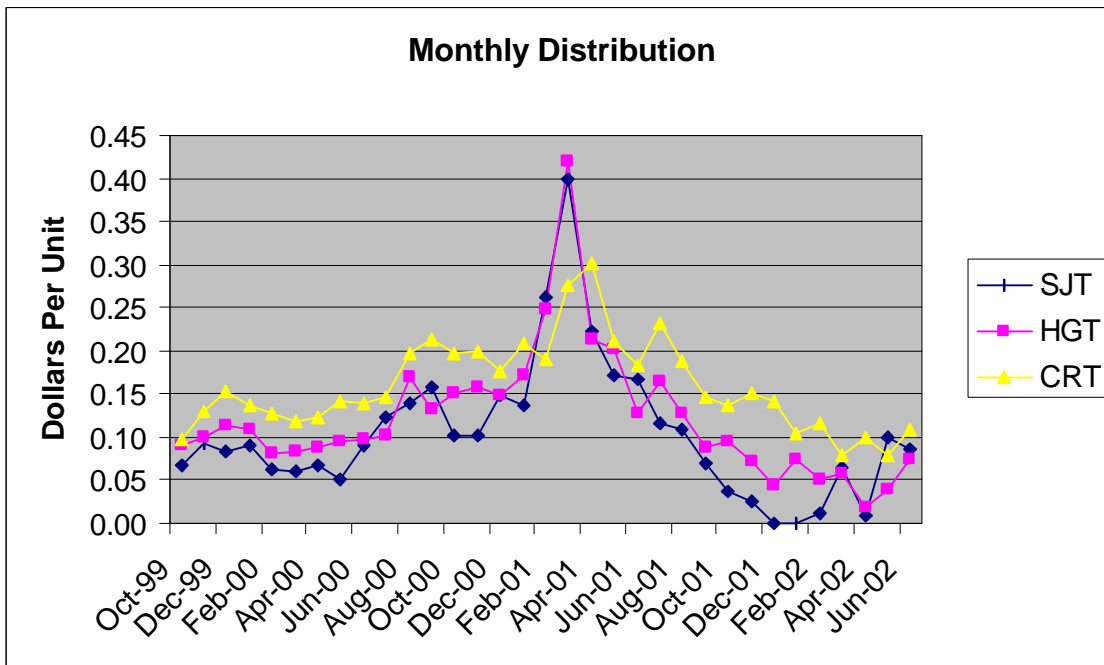
EV = Enterprise Value = Market Cap and Debt; Ebitda = Earnings before interest, tax, depreciation and amortization; NTM = Next Twelve Months Ended June 30, 2003; P/E = Stock Price to Earnings; PV = Present Value of oil and gas and other businesses

Analyses are prepared from original sources and data believed to be reliable, but no representation is made as to their accuracy or completeness. Independent energy investment analysis by Kurt Wulff doing business as McDep Associates is posted at www.mcdep.com. Mr. Wulff is not paid by covered companies. Owing shares in energy stocks, neither Mr. Wulff nor his spouse act contrary to a buy or sell rating.

Natural Gas Royalty Trusts

A Weekly Analysis

June 24, 2002



Analyses are prepared from original sources and data believed to be reliable, but no representation is made as to their accuracy or completeness. Independent energy investment analysis by Kurt Wulff doing business as McDep Associates is posted at www.mcdep.com. Mr. Wulff is not paid by covered companies. Owning shares in energy stocks, neither Mr. Wulff nor his spouse act contrary to a buy or sell rating.

Natural Gas Royalty Trusts

A Weekly Analysis

June 24, 2002

Table CRT-1
Cross Timbers Royalty Trust
Present Value

Volume Decline (%/yr):	10	Price Escalation post 2007 (%/yr):	2.6
Volume Enhancement (%/yr):	10	Discount Rate (%/yr):	6.2
		U.S. TIPS Inflation (%/yr):	1.8
		U.S. 10 Year Yield (%/yr):	4.8
PV/Volume (\$/mcf):	2.57	PV/EBITDA 2002:	13.1

Year	Natural Gas Volume			Price (\$/mcf)	Revenue (\$mm)	Oil Net (\$mm)	Distribution (\$mm)	Tax Credit (\$/unit)	Disc Factor	Present Value (\$/unit)	
	Basic (bcf)	Enhanced (bcf)	Total (bcf)								
Total 2003 through 2032; years ending on 6/30											
	26	20	47	4.49	210	3	213	35.48	0.10	0.56	20.00
2003	2.7	0.0	2.7	2.88	7.9	0.7	8.6	1.43	0.10	0.97	1.48
2004	2.5	0.3	2.7	3.78	10.4	0.8	11.2	1.86		0.91	1.70
2005	2.2	0.5	2.7	3.80	10.4	0.6	11.0	1.83		0.86	1.58
2006	2.0	0.7	2.7	3.80	10.4	0.4	10.8	1.81		0.81	1.46
2007	1.8	0.9	2.7	3.87	10.6	0.3	10.9	1.82		0.76	1.39
2008	1.6	1.1	2.7	3.97	10.9	0.2	11.1	1.85		0.72	1.33
2009	1.5	1.3	2.7	4.07	11.2	0.2	11.3	1.89		0.68	1.28
2010	1.3	1.4	2.7	4.18	11.5	0.1	11.6	1.93		0.64	1.23
2011	1.2	1.6	2.7	4.28	11.7		11.7	1.96		0.60	1.17
2012	1.1	1.4	2.5	4.39	10.8		10.8	1.81		0.56	1.02
2013	1.0	1.3	2.2	4.51	10.0		10.0	1.67		0.53	0.89
2014	0.9	1.1	2.0	4.62	9.2		9.2	1.54		0.50	0.77
2015	0.8	1.0	1.8	4.74	8.5		8.5	1.42		0.47	0.67
2016	0.7	0.9	1.6	4.86	7.9		7.9	1.31		0.44	0.58
2017	0.6	0.8	1.5	4.98	7.3		7.3	1.21		0.42	0.51
2018	0.6	0.7	1.3	5.11	6.7		6.7	1.12		0.39	0.44
2019	0.5	0.7	1.2	5.24	6.2		6.2	1.03		0.37	0.38
2020	0.5	0.6	1.1	5.37	5.7		5.7	0.95		0.35	0.33
2021	0.4	0.5	1.0	5.51	5.3		5.3	0.88		0.33	0.29
2022	0.4	0.5	0.9	5.65	4.9		4.9	0.81		0.31	0.25
2023	0.3	0.4	0.8	5.80	4.5		4.5	0.75		0.29	0.22
2024	0.3	0.4	0.7	5.94	4.1		4.1	0.69		0.27	0.19
2025	0.3	0.4	0.6	6.09	3.8		3.8	0.64		0.26	0.16
2026	0.2	0.3	0.6	6.25	3.5		3.5	0.59		0.24	0.14
2027	0.2	0.3	0.5	6.41	3.3		3.3	0.54		0.23	0.12
2028	0.2	0.3	0.5	6.57	3.0		3.0	0.50		0.22	0.11
2029	0.2	0.2	0.4	6.74	2.8		2.8	0.46		0.20	0.09
2030	0.2	0.2	0.4	6.91	2.6		2.6	0.43		0.19	0.08
2031	0.1	0.2	0.3	7.09	2.4		2.4	0.39		0.18	0.07
2032	0.1	0.2	0.3	7.27	2.2		2.2	0.36		0.17	0.06

Analyses are prepared from original sources and data believed to be reliable, but no representation is made as to their accuracy or completeness. Independent energy investment analysis by Kurt Wulff doing business as McDep Associates is posted at www.mcdep.com. Mr. Wulff is not paid by covered companies. Owning shares in energy stocks, neither Mr. Wulff nor his spouse act contrary to a buy or sell rating.

Natural Gas Royalty Trusts

A Weekly Analysis

June 24, 2002

Table CRT-2
Cross Timbers Royalty Trust
Distributable Income

	<i>Q1</i>	<i>Q2E</i>	<i>Q3E</i>	<i>Q4E</i>	<i>Year</i>	<i>Q1E</i>	<i>Q2E</i>	<i>Next</i>
	<i>3/31/02</i>	<i>6/30/02</i>	<i>9/30/02</i>	<i>12/31/02</i>	<i>2002E</i>	<i>3/31/03</i>	<i>6/30/03</i>	<i>Twelve</i>
								<i>Months</i>
								<i>6/30/03</i>
Highlights								
Tax credit (\$mm)								
Per unit	0.03	0.03	0.03	0.03	0.10			0.05
Distributable Income (\$mm)	1.80	1.72	2.54	2.50	8.57	2.69	2.74	10.47
Per unit	0.30	0.29	0.42	0.42	1.43	0.45	0.46	1.75
Units (millions)	6.0	6.0	6.0	6.0	6.0	6.0	6.0	6.0
Volume								
Natural Gas (bcf)	0.78	0.75	0.76	0.76	3.05	0.76	0.75	3.03
Natural Gas (mmcf)	8.5	8.3	8.3	8.3	8.3	8.3	8.3	8.3
Days	92	90	91	92	365	92	90	365
Oil (mb)	83	80	83	83	330	83	80	330
Oil (mbd)	0.90	0.90	0.90	0.90	0.90	0.90	0.90	3.61
Days	92	89	92	92	365	92	89	365
Total (bcf)	1.28	1.23	1.25	1.26	5.02	1.26	1.23	5.01
Price								
Natural Gas (HH lagged three months)								
Henry Hub (\$/mmbtu)	2.41	2.53	3.37	3.27	2.90	3.63	3.94	3.55
Differential (\$/mmbtu)	(0.13)	0.05	0.07	0.07	0.01	0.07	0.08	0.07
CRT (\$/mcf)	2.54	2.48	3.30	3.21	2.88	3.56	3.86	3.48
Oil (\$/bbl) (WTI lagged two months)								
WTI Cushing	19.56	23.80	25.85	25.87	23.77	25.57	25.07	25.59
CRT	17.28	21.80	23.85	23.87	21.70	23.57	23.07	23.59
Total (\$/mcf)	2.67	2.93	3.57	3.51	3.17	3.71	3.86	3.66
Revenue (\$mm)								
Natural Gas	1.98	1.85	2.50	2.45	8.78	2.72	2.89	10.55
Oil	1.44	1.75	1.98	1.98	7.15	1.96	1.85	7.78
Total	3.42	3.60	4.48	4.43	15.93	4.68	4.74	18.32
Cost (\$mm)								
Tax, transport & other	0.34	0.50	0.63	0.62	2.09	0.65	0.66	2.57
Production	0.75	0.75	0.75	0.75	3.00	0.75	0.75	3.00
Total	1.09	1.26	1.38	1.37	5.09	1.41	1.41	5.57
Cash flow (\$mm)								
Development	0.28	0.20	0.20	0.20	0.88	0.20	0.20	0.80
Excess	(0.07)							
Net proceeds (\$mm)								
	2.11	2.15	2.90	2.86	10.02	3.07	3.13	11.96
Royalty income (\$mm)								
Royalty/Net proceeds	89%	89%	89%	89%	89%	89%	89%	89%
Administration	0.08	0.19	0.04	0.04	0.34	0.04	0.04	0.16
Distributable income (\$mm)								
	1.80	1.72	2.54	2.50	8.57	2.69	2.74	10.47
<i>Modeling ratios</i>								
Tax and other/revenue	0.10	0.14	0.14	0.14	0.13	0.14	0.14	0.14

Analyses are prepared from original sources and data believed to be reliable, but no representation is made as to their accuracy or completeness. Independent energy investment analysis by Kurt Wulff doing business as McDep Associates is posted at www.mcdep.com. Mr. Wulff is not paid by covered companies. Owning shares in energy stocks, neither Mr. Wulff nor his spouse act contrary to a buy or sell rating.

Natural Gas Royalty Trusts

A Weekly Analysis

June 24, 2002

Table HGT-1
Hugoton Royalty Trust
Present Value

Volume Decline (%/yr):	10	Price Escalation Post 2007 (%/yr):	2.6
Volume Enhancement (%/yr):	10	Discount rate (%/yr):	6.8
Capex/Cash Flow (%):	30	U.S. TIPS Inflation (%/yr):	1.8
Variable Cost (%):	17	U.S. 10 Year Yield (%/yr):	4.8
PV/Volume (\$/mcf):	1.24	PV/EBITDA 2002:	12.4

Year	Basic (bcf)	Volume Enhanced (bcf)	Total (bcf)	Price (\$/mcf)	Revenue (\$mm)	Fixed Cost (\$mm)	Var Cost (\$mm)	Cap Ex (\$mm)	Distribution (\$mm)	(\$/unit)	Tax Credit (\$/unit)	Disc Factor	Present Value (\$/unit)
Total 2003 through 2032; years ending on 6/30													
	287	223	509	4.39	2237	446	380	215	1196	29.89	0.02	0.53	15.80
2003	29.9	0.0	29.9	2.64	79.1	14.9	13.4	18.4	32.4	0.81	0.02	0.97	0.80
2004	26.9	3.0	29.9	3.71	111.0	14.9	18.9	23.2	54.1	1.35		0.91	1.22
2005	24.2	5.7	29.9	3.73	111.5	14.9	19.0	23.3	54.4	1.36		0.85	1.15
2006	21.8	8.1	29.9	3.72	111.5	14.9	19.0	23.3	54.4	1.36		0.79	1.08
2007	19.6	10.3	29.9	3.80	113.6	14.9	19.3	23.8	55.6	1.39		0.74	1.03
2008	17.7	12.3	29.9	3.89	116.5	14.9	19.8	24.6	57.3	1.43		0.70	1.00
2009	15.9	14.0	29.9	3.99	119.5	14.9	20.3	25.3	59.0	1.48		0.65	0.96
2010	14.3	15.6	29.9	4.09	122.5	14.9	20.8	26.1	60.8	1.52		0.61	0.93
2011	12.9	17.1	29.9	4.20	125.7	14.9	21.4	26.8	62.6	1.57		0.57	0.89
2012	11.6	15.3	26.9	4.30	116.0	14.9	19.7		81.4	2.03		0.54	1.09
2013	10.4	13.8	24.2	4.41	107.1	14.9	18.2		74.0	1.85		0.50	0.93
2014	9.4	12.4	21.8	4.53	98.8	14.9	16.8		67.1	1.68		0.47	0.79
2015	8.5	11.2	19.6	4.64	91.2	14.9	15.5		60.8	1.52		0.44	0.67
2016	7.6	10.1	17.7	4.76	84.2	14.9	14.3		55.0	1.37		0.41	0.57
2017	6.8	9.1	15.9	4.88	77.7	14.9	13.2		49.6	1.24		0.39	0.48
2018	6.2	8.2	14.3	5.01	71.7	14.9	12.2		44.6	1.12		0.36	0.40
2019	5.5	7.3	12.9	5.13	66.2	14.9	11.2		40.0	1.00		0.34	0.34
2020	5.0	6.6	11.6	5.27	61.1	14.9	10.4		35.8	0.90		0.32	0.28
2021	4.5	5.9	10.4	5.40	56.4	14.9	9.6		31.9	0.80		0.30	0.24
2022	4.0	5.4	9.4	5.54	52.0	14.9	8.8		28.3	0.71		0.28	0.20
2023	3.6	4.8	8.5	5.68	48.0	14.9	8.2		25.0	0.62		0.26	0.16
2024	3.3	4.3	7.6	5.82	44.3	14.9	7.5		21.9	0.55		0.24	0.13
2025	2.9	3.9	6.8	5.97	40.9	14.9	7.0		19.1	0.48		0.23	0.11
2026	2.7	3.5	6.2	6.12	37.7	14.9	6.4		16.5	0.41		0.21	0.09
2027	2.4	3.2	5.5	6.28	34.8	14.9	5.9		14.0	0.35		0.20	0.07
2028	2.1	2.8	5.0	6.44	32.2	14.9	5.5		11.8	0.30		0.19	0.06
2029	1.9	2.6	4.5	6.60	29.7	14.9	5.0		9.8	0.24		0.17	0.04
2030	1.7	2.3	4.0	6.77	27.4	14.9	4.7		7.9	0.20		0.16	0.03
2031	1.6	2.1	3.6	6.95	25.3	14.9	4.3		6.1	0.15		0.15	0.02
2032	1.4	1.9	3.3	7.12	23.3	14.9	4.0		4.5	0.11		0.14	0.02

Analyses are prepared from original sources and data believed to be reliable, but no representation is made as to their accuracy or completeness. Independent energy investment analysis by Kurt Wulff doing business as McDep Associates is posted at www.mcdep.com. Mr. Wulff is not paid by covered companies. Owning shares in energy stocks, neither Mr. Wulff nor his spouse act contrary to a buy or sell rating.

Natural Gas Royalty Trusts

A Weekly Analysis

June 24, 2002

Table HGT-2
Hugoton Royalty Trust
Distributable Income

	<i>Q1</i>	<i>Q2E</i>	<i>Q3E</i>	<i>Q4E</i>	<i>Year</i>	<i>Q1E</i>	<i>Q2E</i>	<i>Next Twelve Months</i>
	<i>3/31/02</i>	<i>6/30/02</i>	<i>9/30/02</i>	<i>12/31/02</i>	<i>2002E</i>	<i>3/31/03</i>	<i>6/30/03</i>	<i>6/30/03</i>
Highlights								
Revenue (\$mm) (80%)	18.5	16.5	22.0	22.1	79.1	25.3	24.5	93.8
Cash flow (\$mm) (80%)	12.0	10.0	14.5	14.5	51.1	17.4	16.9	63.3
Per unit	0.30	0.25	0.36	0.36	1.28	0.44	0.42	1.58
Tax credit (\$mm)	0.2	0.2	0.2	0.2	0.7			0.3
Per unit	0.00	0.00	0.00	0.00	0.02			0.01
Distributable Income (\$mm)	7.4	5.3	9.8	9.9	32.4	12.8	12.2	44.7
Per unit	0.18	0.13	0.25	0.25	0.81	0.32	0.31	1.12
Units (millions)	40.0	40.0	40.0	40.0	40.0	40.0	40.0	40.0
Volume								
Natural Gas (bcf)	9.0	8.3	9.0	9.0	35.3	9.0	8.7	35.7
Natural Gas (mmcf/d)	98.1	93.1	97.8	97.8	96.7	97.8	97.8	97.8
Days	92	89	92	92	365	92	89	365
Oil (mb)	90	86	88	87	352	87	83	345
Oil (mbd)	1.0	1.0	1.0	0.9	1.0	0.9	0.9	0.9
Days	92	89	92	92	365	92	89	365
Total (bcf)	9.6	8.8	9.5	9.5	37.4	9.5	9.2	37.8
Price								
Natural Gas (HH lagged two months)								
Henry Hub (\$/mmbtu)	2.34	2.92	3.30	3.32	2.97	3.85	3.86	3.58
Differential (\$/mmbtu)	(0.03)	0.67	0.50	0.50	0.40	0.58	0.58	0.54
HGT (\$/mcf)	2.38	2.25	2.81	2.82	2.57	3.27	3.28	3.04
Oil (\$/bbl) (WTI Cushing lagged two months)								
WTI Cushing	19.56	23.80	25.85	25.87	23.77	25.57	25.07	25.59
HGT	18.80	23.30	25.35	25.37	23.18	25.07	24.57	25.10
Total (\$/mcf)	2.42	2.34	2.89	2.90	2.64	3.32	3.33	3.11
Revenue (\$mm)								
Natural Gas	21.5	18.6	25.3	25.4	90.7	29.4	28.6	108.6
Oil	1.7	2.0	2.2	2.2	8.2	2.2	2.0	8.7
Total	23.2	20.6	27.5	27.6	98.9	31.6	30.6	117.3
Cost (\$mm)								
Tax, transport & other	1.7	2.1	2.8	2.8	9.3	3.2	3.1	11.7
Production	4.4	4.0	4.8	4.8	17.9	4.8	4.6	18.9
Overhead	2.0	2.0	1.9	1.9	7.8	1.9	1.8	7.6
Total	8.1	8.1	9.4	9.4	35.0	9.8	9.5	38.2
Cash flow (\$mm)	15.1	12.5	18.1	18.2	63.8	21.8	21.1	79.1
Development	5.8	5.8	5.7	5.7	23.0	5.7	5.7	22.8
Net proceeds (\$mm)	9.3	6.8	12.4	12.5	40.9	16.1	15.4	56.3
Royalty income (\$mm)	7.4	5.4	9.9	10.0	32.7	12.9	12.3	45.1
Royalty/Net proceeds	80%	80%	80%	80%	80%	80%	80%	80%
Administration	0.1	0.1	0.1	0.1	0.3	0.1	0.1	0.3
Distributable income (\$mm)	7.4	5.3	9.8	9.9	32.4	12.8	12.2	44.7
<i>Cost ratios</i>								
Tax and other/revenue	7%	10%	10%	10%	9%	10%	10%	10%
Production cost (\$/mcf)	0.46	0.46	0.50	0.50	0.48	0.50	0.50	0.50
Overhead cost (\$/mcf)	0.21	0.23	0.20	0.20	0.21	0.20	0.20	0.20
Development/Cash flow	0.38	0.46	0.32	0.31	0.36	0.26	0.27	0.29

Analyses are prepared from original sources and data believed to be reliable, but no representation is made as to their accuracy or completeness. Independent energy investment analysis by Kurt Wulff doing business as McDep Associates is posted at www.mcdep.com. Mr. Wulff is not paid by covered companies. Owning shares in energy stocks, neither Mr. Wulff nor his spouse act contrary to a buy or sell rating.

Natural Gas Royalty Trusts

A Weekly Analysis

June 24, 2002

Table SJT-1
San Juan Basin Royalty Trust
Present Value

Volume Decline (%/yr):	10	Price Escalation Post 2007 (%/yr):	2.6
Volume Enhancement (%/yr):	10	Discount rate (%/yr):	6.8
Capex/Cash Flow (%):	25	U.S. TIPS Inflation (%/yr):	1.8
Variable Cost (%):	12	U.S. 10 Year Yield (%/yr):	4.8

PV/Volume (\$/mcf):	1.31	PV/EBITDA 2002:	14.1
---------------------	------	-----------------	------

Year	Basic (bcf)	Enhanced (bcf)	Total (bcf)	Price (\$/mcf)	Revenue (\$mm)	Fixed Cost (\$mm)	Var Cost (\$mm)	Cap Ex (\$mm)	Distribution (\$/unit)	Tax Credit (\$/unit)	Disc Factor	Present Value (\$/unit)	
Total 2003 through 2032; years ending on 6/30													
	325	253	578	4.01	2320	395	278	206	1441	30.93	0.04	0.52	16.20
2003	34.0	0.0	34.0	2.38	80.8	17.5	9.7	18.8	34.8	0.75	0.04	0.97	0.76
2004	30.6	3.4	34.0	3.39	115.2	13.0	13.8	22.1	66.3	1.42		0.91	1.29
2005	27.5	6.5	34.0	3.41	115.7	13.0	13.9	22.2	66.6	1.43		0.85	1.21
2006	24.8	9.2	34.0	3.40	115.7	13.0	13.9	22.2	66.6	1.43		0.79	1.14
2007	22.3	11.7	34.0	3.47	117.9	13.0	14.1	22.7	68.1	1.46		0.74	1.09
2008	20.1	13.9	34.0	3.56	120.9	13.0	14.5	23.3	70.0	1.50		0.70	1.05
2009	18.1	15.9	34.0	3.65	124.0	13.0	14.9	24.0	72.1	1.55		0.65	1.01
2010	16.3	17.7	34.0	3.74	127.1	13.0	15.3	24.7	74.2	1.59		0.61	0.97
2011	14.6	19.4	34.0	3.84	130.4	13.0	15.6	25.4	76.3	1.64		0.57	0.94
2012	13.2	17.4	30.6	3.93	120.3	13.0	14.4		92.9	1.99		0.54	1.07
2013	11.8	15.7	27.5	4.03	111.1	13.0	13.3		84.7	1.82		0.50	0.91
2014	10.7	14.1	24.8	4.14	102.5	13.0	12.3		77.2	1.66		0.47	0.78
2015	9.6	12.7	22.3	4.24	94.6	13.0	11.4		70.3	1.51		0.44	0.66
2016	8.6	11.4	20.1	4.35	87.3	13.0	10.5		63.8	1.37		0.41	0.56
2017	7.8	10.3	18.1	4.46	80.6	13.0	9.7		57.9	1.24		0.39	0.48
2018	7.0	9.3	16.3	4.58	74.4	13.0	8.9		52.5	1.13		0.36	0.41
2019	6.3	8.3	14.6	4.69	68.7	13.0	8.2		47.4	1.02		0.34	0.34
2020	5.7	7.5	13.2	4.81	63.4	13.0	7.6		42.8	0.92		0.32	0.29
2021	5.1	6.7	11.8	4.94	58.5	13.0	7.0		38.5	0.83		0.30	0.24
2022	4.6	6.1	10.7	5.06	54.0	13.0	6.5		34.5	0.74		0.28	0.21
2023	4.1	5.5	9.6	5.19	49.8	13.0	6.0		30.8	0.66		0.26	0.17
2024	3.7	4.9	8.6	5.32	46.0	13.0	5.5		27.5	0.59		0.24	0.14
2025	3.3	4.4	7.8	5.46	42.4	13.0	5.1		24.3	0.52		0.23	0.12
2026	3.0	4.0	7.0	5.60	39.2	13.0	4.7		21.5	0.46		0.21	0.10
2027	2.7	3.6	6.3	5.74	36.1	13.0	4.3		18.8	0.40		0.20	0.08
2028	2.4	3.2	5.7	5.89	33.4	13.0	4.0		16.4	0.35		0.19	0.07
2029	2.2	2.9	5.1	6.04	30.8	13.0	3.7		14.1	0.30		0.17	0.05
2030	2.0	2.6	4.6	6.19	28.4	13.0	3.4		12.0	0.26		0.16	0.04
2031	1.8	2.4	4.1	6.35	26.2	13.0	3.1		10.1	0.22		0.15	0.03
2032	1.6	2.1	3.7	6.51	24.2	13.0	2.9		8.3	0.18		0.14	0.03

Analyses are prepared from original sources and data believed to be reliable, but no representation is made as to their accuracy or completeness. Independent energy investment analysis by Kurt Wulff doing business as McDep Associates is posted at www.mcdep.com. Mr. Wulff is not paid by covered companies. Owning shares in energy stocks, neither Mr. Wulff nor his spouse act contrary to a buy or sell rating.

Natural Gas Royalty Trusts

A Weekly Analysis

June 24, 2002

Table SJT-2
San Juan Basin Royalty Trust
Distributable Income

	<i>Q1</i>	<i>Q2E</i>	<i>Q3E</i>	<i>Q4E</i>	<i>Year</i>	<i>Q1E</i>	<i>Q2E</i>	<i>Next Twelve Months</i>
	<i>3/31/02</i>	<i>6/30/02</i>	<i>9/30/02</i>	<i>12/31/02</i>	<i>2002E</i>	<i>3/31/03</i>	<i>6/30/03</i>	<i>6/30/03</i>
Highlights								
Revenue (\$mm) (75%)	19.2	18.5	20.3	22.8	80.8	26.4	25.6	95.2
Cash flow (\$mm) (75%)	14.1	14.0	15.4	17.7	61.2	21.0	20.3	74.4
Per unit	0.30	0.30	0.33	0.38	1.31	0.45	0.44	1.60
Tax credit (\$mm)	0.5	0.5	0.5	0.5	1.9			0.9
Per unit	0.01	0.01	0.01	0.01	0.04			0.02
Distributable Income (\$mm)	3.5	9.0	9.2	13.1	34.8	15.5	15.0	52.8
Per unit	0.08	0.19	0.20	0.28	0.75	0.33	0.32	1.13
Units (millions)	46.6	46.6	46.6	46.6	46.6	46.6	46.6	46.6
Volume								
Natural gas (mmbtu)	12.5	12.0	12.0	12.0	48.6	12.0	11.6	47.7
Heat Content(btu/cf)	1,092	1,077	1,086	1,086	1,085	1,086	1,086	1,086
Natural gas (bcf)	11.5	11.1	11.1	11.1	44.8	11.1	10.7	43.9
Natural Gas (mmcf)	124.7	125.1	120.4	120.4	122.6	120.4	120.4	120.4
Days	92	89	92	92	365	92	89	365
Oil (mb)	0.0	0.0	0.0	0.0	0.1	0.0	0.0	0.1
Oil (mmb)	0.3	0.3	0.3	0.3	0.3	0.3	0.3	0.3
Total gas & oil (bcf)	11.6	11.3	11.2	11.2	45.3	11.2	10.9	44.5
Price								
Natural gas (\$/mmbtu) (Henry Hub lagged two months)								
Henry Hub (\$/mmbtu)	2.34	2.92	3.30	3.32	2.97	3.85	3.86	3.58
Differential (%)	14	31	32	25	27	25	25	27
Total	2.01	2.02	2.21	2.49	2.18	2.89	2.90	2.62
Natural gas (\$/mcf)	2.20	2.18	2.40	2.70	2.37	3.14	3.14	2.84
Oil (\$/bbl) (WTI Cushing lagged two months)								
WTI Cushing	19.56	23.80	25.85	25.87	23.77	25.57	25.07	25.59
SJT	15.78	19.80	21.85	21.87	19.83	21.57	21.07	21.59
Total gas & oil (\$/mcf)	2.20	2.19	2.42	2.71	2.38	3.14	3.15	2.85
Revenue (\$mm)								
Natural Gas	25.2	24.2	26.6	29.9	106.0	34.7	33.7	124.9
Oil	0.4	0.4	0.5	0.5	1.8	0.5	0.5	2.0
Total	25.6	24.7	27.1	30.4	107.8	35.2	34.2	126.9
Cost (\$mm)								
Severance tax	2.6	2.4	2.8	3.0	10.8	3.5	3.4	12.8
Operating	4.1	3.7	3.8	3.8	15.4	3.8	3.6	15.0
Total	6.7	6.0	6.6	6.8	26.2	7.3	7.1	27.7
Cash flow (\$mm)								
Development	11.3	3.4	4.5	5.9	25.1	7.0	6.8	24.2
Net proceeds (\$mm)								
Royalty/Net proceeds	7.5	15.3	16.0	17.7	56.5	21.0	20.3	75.0
Royalty income (\$mm)								
Royalty/Net proceeds	5.6	11.5	12.0	13.3	42.4	15.7	15.2	56.3
Administration	75%	75%	75%	75%	75%	75%	75%	3.0
One-time	0.4	0.5	0.9	0.2	1.9	0.2	0.2	1.5
One-time	1.7	2.0	2.0		5.7			2.0
Distributable income (\$mm)								
	3.5	9.0	9.2	13.1	34.8	15.5	15.0	52.8
<i>Modeling ratios</i>								
Severance tax/revenue	10.2%	9.6%	10.3%	10.0%	10.0%	10.0%	10.0%	10.1%
Operating cost (\$/mcf)	0.36	0.33	0.34	0.34	0.34	0.34	0.34	0.34

Analyses are prepared from original sources and data believed to be reliable, but no representation is made as to their accuracy or completeness. Independent energy investment analysis by Kurt Wulff doing business as McDep Associates is posted at www.mcdep.com. Mr. Wulff is not paid by covered companies. Owning shares in energy stocks, neither Mr. Wulff nor his spouse act contrary to a buy or sell rating.

Natural Gas Royalty Trusts

A Weekly Analysis

June 24, 2002

Table SJT-3
San Juan Basin Royalty Trust
Monthly Declarations

	<i>Apr-02</i>	<i>May-02</i>	<i>Jun-02</i>	<i>Jul-02</i>	<i>Aug-02</i>	<i>Sep-02</i>
Distribution (\$/unit)						
Declared	0.01	0.10	0.08			
Projected				0.06	0.05	0.08
Volume						
Natural gas (mmbtu)	3.82	4.29	3.88	4.05	3.92	4.05
Heat Content(btu/cf)	1,057	1,108	1,064	1,086	1,086	1,086
Natural gas (bcf)	3.62	3.87	3.65	3.73	3.61	3.73
Natural Gas (mmcf)	129	125	122	120	120	120
Days	28	31	30	31	30	31
Price						
Natural gas industry quotes lagged two months (\$/mmbtu)						
Henry Hub Daily/Futures	2.31	3.03	3.42	3.49	3.20	3.22
San Juan Monthly Index	1.81	2.14	3.04	2.39	2.24	
SJT/Henry Hub	0.62	0.64	0.78	0.62	0.64	0.75
SJT/San Juan Index	0.80	0.91	0.88	0.91	0.91	
SJT (\$/mmbtu)	1.44	1.95	2.68	2.17	2.04	2.42
SJT (\$/mcf)	1.52	2.16	2.85	2.36	2.21	2.62
Revenue (\$mm)						
Natural Gas	5.5	8.4	10.4	8.8	8.0	9.8
Other	(0.1)	(1.1)	(1.7)	(1.1)	(1.1)	(1.1)
Cost (\$mm)						
Severance tax	0.5	0.8	1.1	0.9	0.8	1.0
Operating	1.4	1.2	1.1	1.3	1.2	1.3
Total	1.8	2.1	2.1	2.2	2.0	2.3
Cash flow (\$mm)	3.6	5.2	6.5	5.5	4.9	6.4
Development	3.0	(0.9)	1.3	1.5	1.5	1.5
Net proceeds (\$mm)	0.6	6.1	5.3	4.0	3.4	4.9
Royalty income (\$mm)	0.5	4.6	4.0	3.0	2.5	3.6
Royalty/Net proceeds	75%	75%	75%	75%	75%	75%
Distributable income (\$mm)	0.5	4.6	4.0	3.0	2.5	3.6
Units (millions)	46.6	46.6	46.6	46.6	46.6	46.6
<i>Latest Twelve Month Average</i>						
Heat Content(btu/cf)	1,088	1,092	1,086			
Natural Gas (mmcf)	120	120	120			
SJT/Henry Hub	0.76	0.75	0.75			
SJT/San Juan Index	0.84	0.85	0.85			
Other revenue	0.0	(0.1)	(0.2)			
Operating	1.3	1.3	1.3			
Development	3.3	2.9	2.9			
Severance tax/revenue	10.4%	10.4%	10.5%			

Analyses are prepared from original sources and data believed to be reliable, but no representation is made as to their accuracy or completeness. Independent energy investment analysis by Kurt Wulff doing business as McDep Associates is posted at www.mcdep.com. Mr. Wulff is not paid by covered companies. Owing shares in energy stocks, neither Mr. Wulff nor his spouse act contrary to a buy or sell rating.